

# MAR SERIES

## Fluorescent Lighting for Hazardous Locations

- Class I, Division 2, Groups A, B, C, & D
- Seismic Tested
- UL 844 Hazardous Locations
- UL 924 Emergency Lighting
- UL 1598A Marine Outside Type
- CSA Certified
- Zone 2, Groups IIA, IIB, IIC
- 55°C Ambient Temperature Rating
- IP66

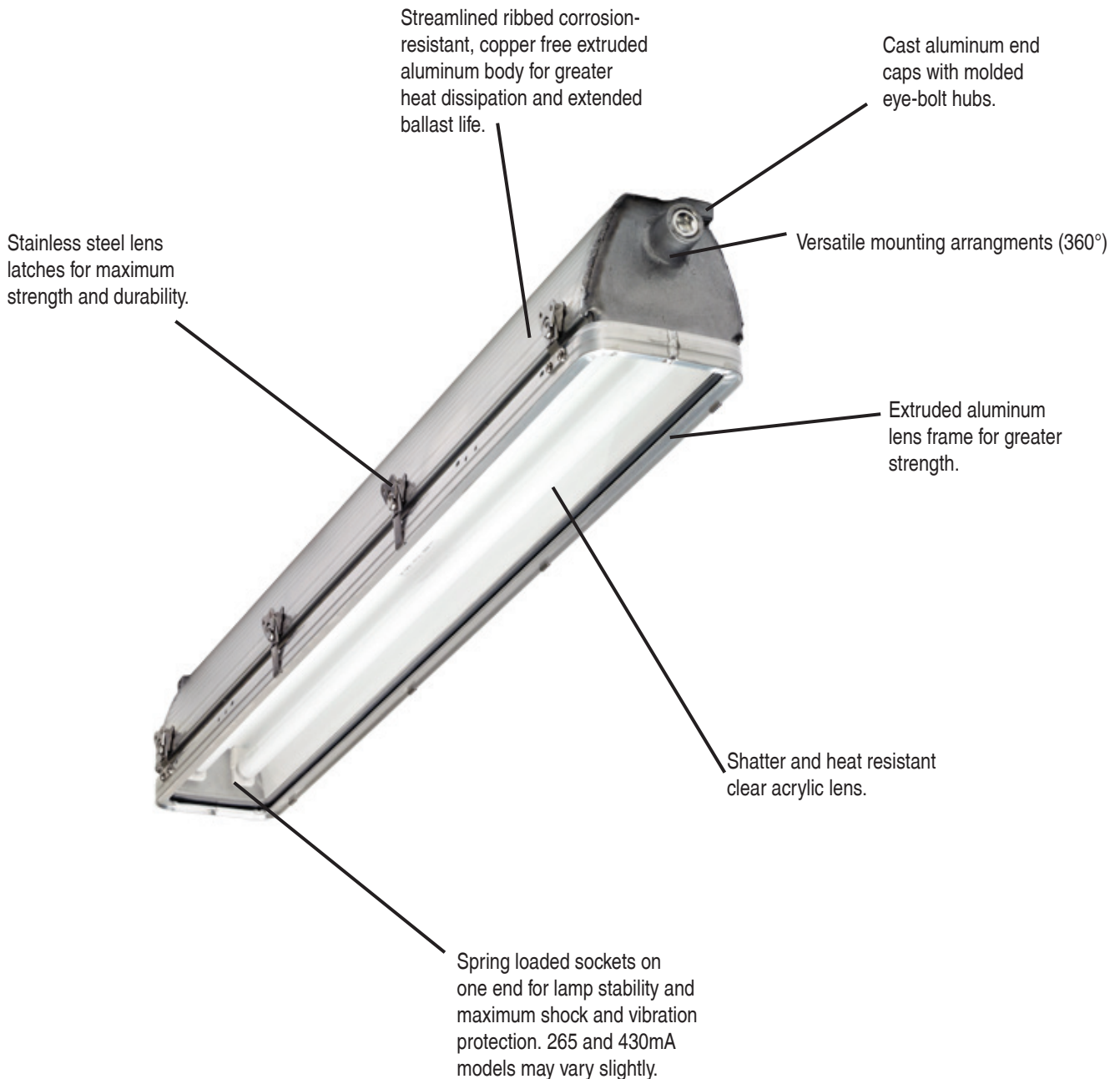


**AZZ** | R-A-L™  
**RIG-A-LITE**

# MAR SERIES

## Fluorescent Lighting for Hazardous Locations

Each MAR Series fixture is individually tested for functional and dielectrical strength at the factory to assure quality and reliability. This heavy-duty fixture arrives completely assembled.



- Convenient access to wiring chamber and thermally protected Class P ballast
- Marine Duty testing exceeds NEMA 4X requirements for hose-down pressure and corrosion testing
- Seismic testing by Structural Dynamics Research Corporation (full scale seismic fragility qualification)  
Tested in frequencies of 1 to 31.6 hertz in 3-plane axis with maximum G force of 18.67 achieved

# FLUORESCENT MAR Series

Hazardous Locations • Class I, Division 2 • UL 844 • UL 1598A Marine Outside Type • CSA Certified • Wet Locations

## Catalog Number Logic

# MAR 800-2-A-XX



1

### BASIC SERIES

MAR Fluorescent Fixture  
Class I, Division 2, Groups A, B, C & D  
UL 844 Hazardous Location  
UL 1598A Marine Outside Type  
CSA Certified  
Zone 2, Groups IIA, IIB & IIC  
55°C Ambient Temperature Rating  
IP66

2

### LAMP CURRENT/LAMP WATTAGE

800 = 800mA, 60/35 Watt  
430 = 430mA, 34/20 Watt (export only)  
425 = 425mA, 40/20 Watt (Slimline)  
265 = 265mA, 32/17 Watt (T8 Lamps)

3

### NOMINAL FIXTURE LENGTH

2 = 2 Foot  
4 = 4 Foot

4

### VOLTAGE/FREQUENCY

E = 12V DC (425mA only)  
F = 24V DC (425mA only)  
G = 32V DC (425mA only)  
H = 347V 60 HZ  
U = 120 thru 277V 50/60 HZ

5

### OPTIONS<sup>1</sup>

TW = End Mounting/Thru Wire  
Cable Installations Only  
F = Single Fuse<sup>2</sup>  
R = Radio Interference Filter  
L = Lamps  
EM = Emergency Battery Backup (Max 50°C)<sup>3</sup>  
TM = Tempered Glass  
HL = Hi-Lumen Ballast (T8 Only)  
EB = Eye Bolt Only

<sup>1</sup>Consult factory for pricing.

<sup>2</sup>Fuse option not available for marine listed fixtures.

<sup>3</sup>Fixture housings with EM option are furnished with baked-on gray epoxy finish

Catalog logic is for explaining catalog number structure only. Not all combinations are possible; consult factory for catalog numbers not listed in charts.

# FLUORESCENT MAR Series

Hazardous Locations • Class I, Division 2 • UL 844 • UL 1598A Marine Outside Type • CSA Certified • Wet Locations



- Class I, Division 2, Groups A, B, C and D
- UL 1598A, UL 844
- CSA Certified
- Zone 2, Groups IIA, IIB and IIC
- 50°C Ambient on EM Models
- 55°C Ambient Temperature Rating
- For drilling rig, marine and industrial lighting hazardous locations
- Corrosion resistant, low copper content aluminum two lamp fixture
- Available in 265, 425, 430 or 800 mA
- Versatile mounting arrangements, (360°)
- Easy access to fluorescent ballast and internal wiring
- Streamlined design gives eye appeal and ruggedness
- Designed to withstand strong vibration
- Available in AC or DC

(Lamps not included)

	Description	Hub Size (inches)	Voltage	Catalog Number <sup>①</sup>
<b>Four Foot Fixture</b>	32 Watt, Instant Start Medium Bi-Pin, T8, 265mA, 48"	3/4	120-277V 50/60 HZ	<b>MAR265-4-U</b>
	34 Watt, Rapid Start Medium Bi-Pin, T12 430mA, 48" (export only)	3/4	120-277V 50/60 HZ	<b>MAR430-4-U</b>
	40 Watt, Instant Start Slimline, T12 48"	3/4	12V DC	<b>MAR425-4-E</b>
			24V DC	<b>MAR425-4-F</b>
			32V DC	<b>MAR425-4-G</b>
60 Watt, Rapid Start High Output, T12 Recessed Double Contact 800mA, 48"	3/4	120-277V 50/60 HZ	<b>MAR800-4-U</b>	
<b>Two Foot Fixture</b>	17 Watt, Instant Start, Medium Bi-Pin T8, 265mA, 24"	3/4	120-277V 50/60 HZ	<b>MAR265-2-U</b>
	20 Watt, Rapid Start Medium Bi-Pin, T12 430mA, 24" (export only)	3/4	120-277V 50/60 HZ	<b>MAR430-2L-U</b>
	20 Watt, Instant Start Slimline, T12 24"	3/4	12V DC	<b>MAR425-2-E</b>
			24V DC	<b>MAR425-2-F</b>
			32V DC	<b>MAR425-2-G</b>
35 Watt, Rapid Start High Output, T12, Recessed Double Contact 800mA, 24"	3/4	120-277V 50/60 HZ	<b>MAR800-2-U</b>	

①Add suffix "TW" for wire thru models

# FLUORESCENT MAR Series

Hazardous Locations • Class I, Division 2 • UL 844 • UL 1598A Marine Outside Type • CSA Certified • Wet Locations

## Certification Guide

Model	Ambient Temperature °C	Class I, Division 2 Groups A, B, C & D	Supply Wire Suitable Temperature °C
MAR 430, 800	55	T4A	90
MAR 425	55	T4A	90
MAR 265	55	T4A	90

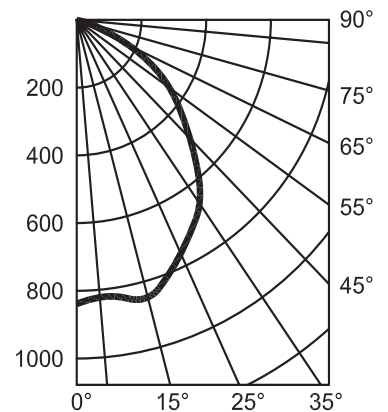
### Coefficients of Utilization MAR2654U

% Effective Ceiling Cavity Reflectance rcc	80			50			10		
	50	30	10	50	30	10	50	30	10
% Wall Reflectance rw	20% Effective Floor Cavity Reflectance								
Room Cavity Ratio RCR									
1	.37	.35	.34	.35	.33	.32	.32	.31	.30
2	.32	.29	.27	.30	.28	.26	.28	.26	.25
3	.28	.25	.22	.26	.24	.22	.24	.23	.21
4	.25	.21	.19	.23	.20	.18	.21	.20	.18
5	.22	.18	.16	.21	.18	.16	.19	.17	.15
6	.19	.16	.14	.18	.16	.14	.17	.15	.13
7	.17	.14	.12	.17	.14	.12	.16	.13	.12
8	.16	.13	.10	.15	.12	.10	.14	.12	.10
9	.14	.11	.9	.14	.11	.9	.13	.11	.9
10	.13	.10	.8	.13	.10	.8	.12	.10	.8

### Candlepower Distribution

Deg.	Parl.	22.5	45	67.5	Norm
0	838	838	838	838	838
5	822	822	822	822	822
15	843	844	847	848	848
25	759	762	765	763	761
35	669	673	673	665	662
45	512	514	508	499	495
55	386	384	373	357	351
65	228	224	207	188	180
75	83	79	621	50	46
85	5	5	5	4	4
90	0	0	0	0	0

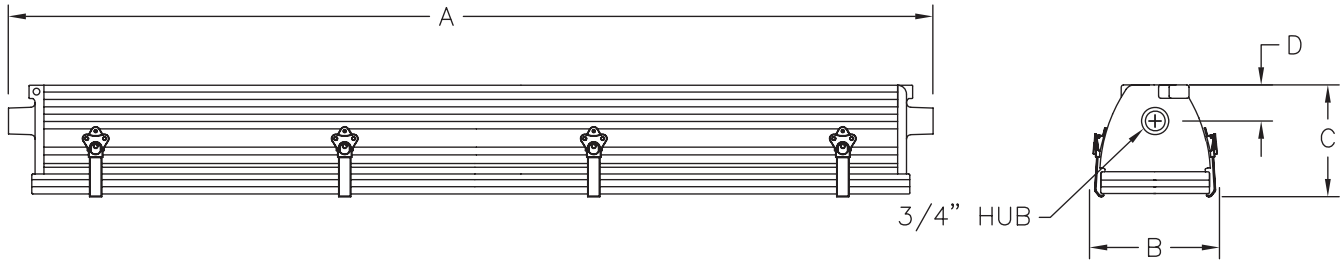
### Photometric Data



# FLUORESCENT MAR Series

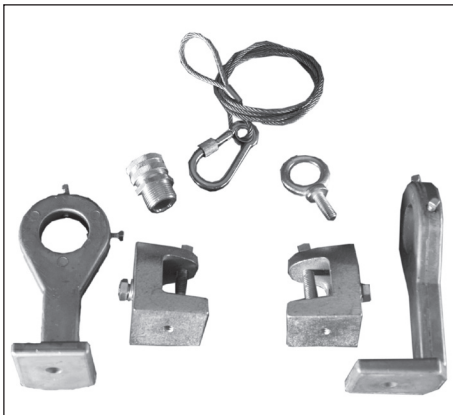
Hazardous Locations • Class I, Division 2 • UL 844 • UL 1598A Marine Outside Type • CSA Certified • Wet Locations

## Fixture Dimensions (inches)



MAR SERIES	Dimensions (inches)				Boxed Weight	Shipping Volume (Boxed Fixtures)
	A	B	C	D		
4 ft. models	52.06	7.38	6.13	1.88	37 lbs.	2.0 cu. ft.
2 ft. models	28.06	7.38	6.13	1.88	27 lbs.	1.0 cu. ft.

## Accessories



### Straight Mounting Kit

Catalog Number: 53033  
Shipping Weight: 5 lbs.



### Offset Mounting Kit

Catalog Number: 53032  
Shipping Weight: 5 lbs.



### Safety Cable

Catalog Number: 10128R  
Shipping Weight: 1 lb.



### Straight Brackets

Catalog Number: 26364  
Shipping Weight: 2 lbs.  
2 required



### Offset Brackets

Catalog Number: 26348  
Shipping Weight: 2 lbs.  
2 required