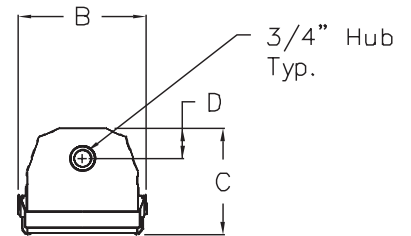
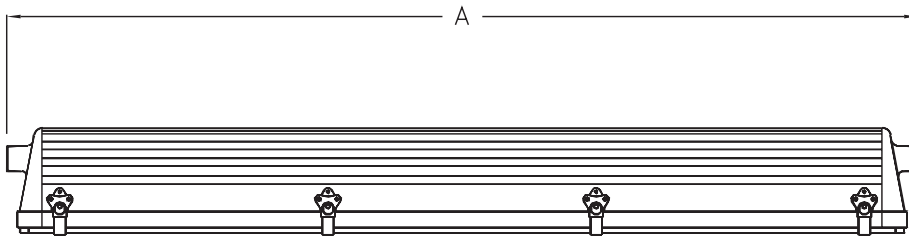


FLUORESCENT MAR2 Series

Hazardous Locations • Class I, Division 2 • UL 844 • UL 1598A Marine Outside Type • CSA Certified • Wet Locations

Fixture Dimensions (inches)



MAR 2 SERIES	Dimensions (inches)				Boxed Weight	Shipping Volume (Boxed Fixtures)
	A	B	C	D		
4 ft. models	52.13	7.38	6.19	1.81	36 lbs.	2.0 cu. ft.
2 ft. models	28.13	7.38	6.19	1.81	26 lbs.	1.0 cu. ft.

Accessories



Straight Mounting Kit

Catalog Number: 53033
Shipping Weight: 5 lbs.



Offset Mounting Kit

Catalog Number: 53032
Shipping Weight: 5 lbs.



Straight Brackets

Catalog Number: 26364
Shipping Weight: 2 lbs.
2 required



Offset Brackets

Catalog Number: 26348
Shipping Weight: 2 lbs.
2 required